

AUTOMATION
is our
BUSINESS



CMA group of companies

Subsidiary located within the largest seaport in Southeast Asia

Pioneering the future of marine technology



Sister company D. ARGOUDELIS & CO LTD, based in Nicosia, Cyprus

Building design, premium residences & industrial projects

Integrated Design, Construction, Development and Promotion services for website and e-Shop

About us

Key Highlights

- ✓ **Industry Leadership:** Over 35 years in **Marine, Industrial, and Energy Automation.**
- ✓ **Global Reach:** Products & services delivered internationally.
- ✓ **Growth & Innovation:** Driven by a commitment to progress and market prominence.

History & Expansion

- ✓ Began with **repairs and construction** in Greek shipyards.
- ✓ Expanded internationally, building a **global reputation.**
- ✓ Success attributed to **professional, dedicated workforce.**

About us

Service Scope

Comprehensive solutions across:

Design, Manufacture,
Installation, Service,
Maintenance



Electrical, Electronic,
Pneumatic, Hydraulic,
Automation systems





MARINE

Being among the most experienced companies worldwide in marine automation, we are offering superior quality services with excellent results.

INDUSTRY

Following the new era of Industry 4.0, we are offering total solutions in industrial automation, by increasing flexibility and improvement of the manufacturing processes' quality and significantly reducing task margins of error.

ENERGY

We develop and implement solutions that are technically, economically and ecologically optimal! From Green ports, renewables, smart building to infrastructure, we can make the difference for your project!

0
1

Innovative Solutions

Delivering advanced automation and control solutions in **maritime** and **industrial sectors**. Focused on **innovation** to enhance **operational efficiency** and meet client needs.

0
2

Skilled Workforce

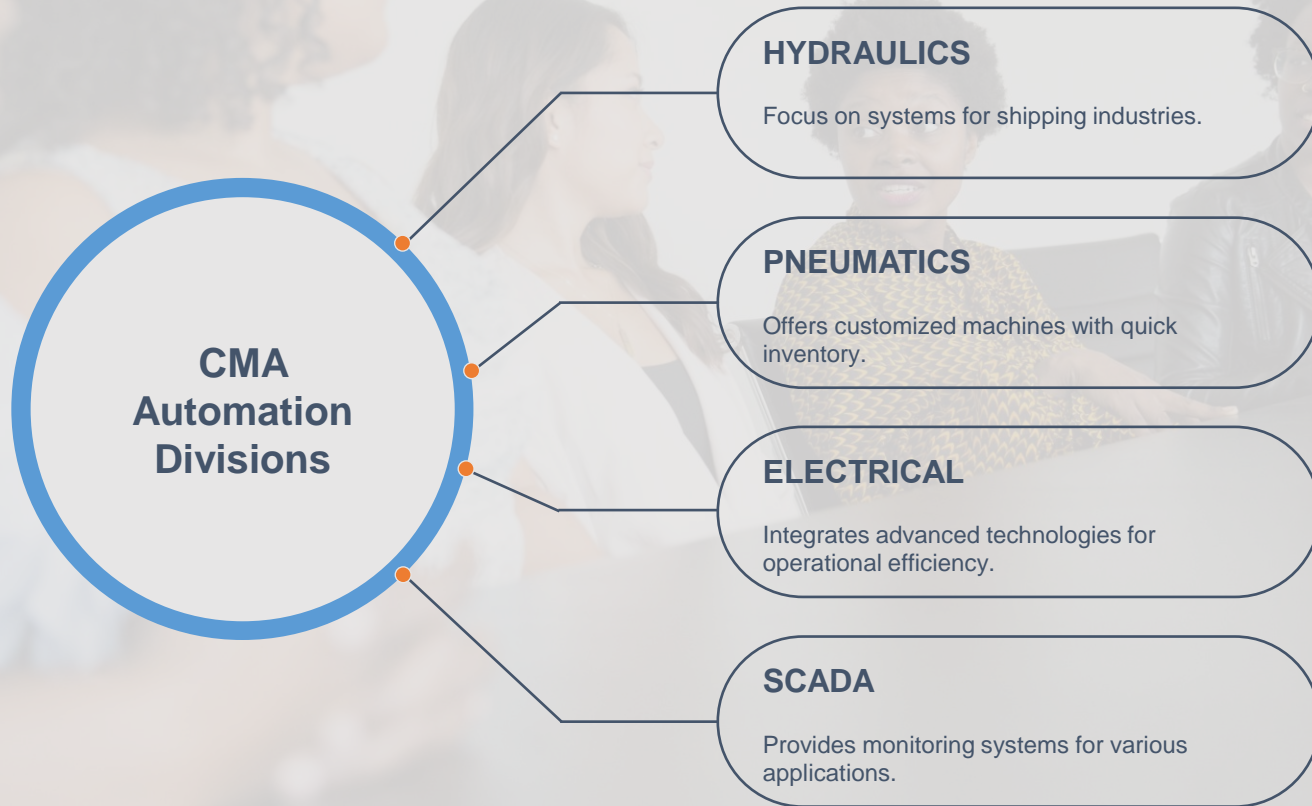
Highly skilled **engineers** and **technicians** ensure excellence in every project, providing **reliable support** and maintaining **high standards**.

0
3

Global Reach

Extensive **international network** serving clients worldwide, delivering **top-tier solutions** and **timely support** across multiple continents.

Divisions and Specialized Services



Product Range and Key Offerings

	Marine Applications	Industrial Applications	Energy Sector	Safety Systems	Monitoring Solutions	Custom Solutions
Temperature Sensors	✓	✓	✓	✓	✓	✓
Pressure Transmitters	✓	✓	✓	✓	✓	✓
Controllers	✓	✓	✓	✓	✓	✓
Gas Detection Systems	✓	✓	✓	✓	✓	✓

Commitment to Quality and Certifications

0
1

Global Standards

Complying with ISO 9001:2015 for quality management systems.

0
2

Environmental Focus

Achieving ISO 14001:2015 for effective environmental management.

0
3

Business Continuity

Obtaining ISO 22301:2019 to ensure operational resilience and continuity.

0
4

Information Security

Securing ISO 27001:2013 for safeguarding client data and information.



0
5

Occupational health & safety management system

Achieving ISO 45001:2018 for Design, Manufacture, Installation, Service, Maintenance, Commerce, Trade and Sale of Electrical, Electronic, Pneumatic, Hydraulic, Automation Parts, Panels and Systems in Marine, Industrial and Energy Market.

0
6

Employee Training

Ongoing training programs to build a knowledgeable and skilled workforce.

0
7

Client Feedback

Implementing feedback mechanisms for continuous improvement in service delivery.

0
8

Innovative Solutions

Investing in R&D to develop cutting-edge technologies and products.



Research and Development Initiatives

01

Innovative Products

Launch of CEP12 Electropneumatic Controller for diverse applications.

02

Focused Training

Regular seminars conducted for skill development in automation technologies.

03

R&D Division

Establishment of a dedicated team for advancing automation technologies.



0

4

Market Research

Ongoing analysis of industry trends to innovate tailored solutions.

0

5

Collaboration Programs

Partnership with global associations for knowledge and technology exchange.

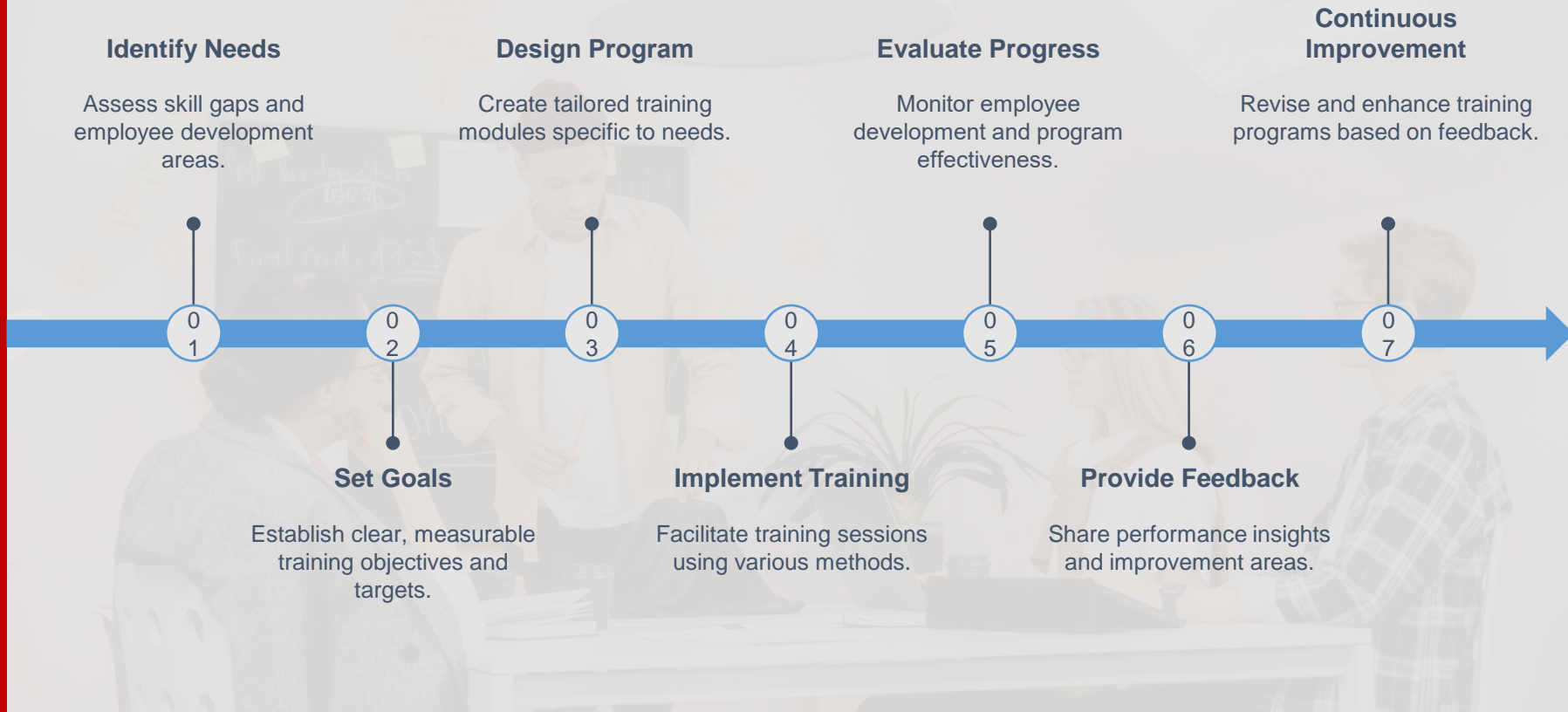
0

6

Employee Engagement

Encouragement of innovative ideas through a strong workforce involvement.

Employee Development and Training Programs



Technological Advancements and Innovations

01

R&D Investments

Increased funding in research and development to enhance automation solutions.

02

New Products

Launch of innovative products like the CEP12 Electropneumatic Controller for diverse applications.

03

Advanced Systems

Integration of cutting-edge electrical, pneumatic, and hydraulic systems for improved performance.

04

Global Compliance

Achieved ISO certifications ensuring adherence to international quality standards.

05

Skilled Workforce

Regular training programs for employees, ensuring expertise in the latest technologies.

06

Industry Engagement

Active participation in global associations to stay updated with technological advances.

07

Customized Solutions

Tailored automation solutions designed to meet specific client requirements in various sectors.





Dimitrios Argoudelis
PRESIDENT



Ioannis Argoudelis
CO-OWNER/CEO



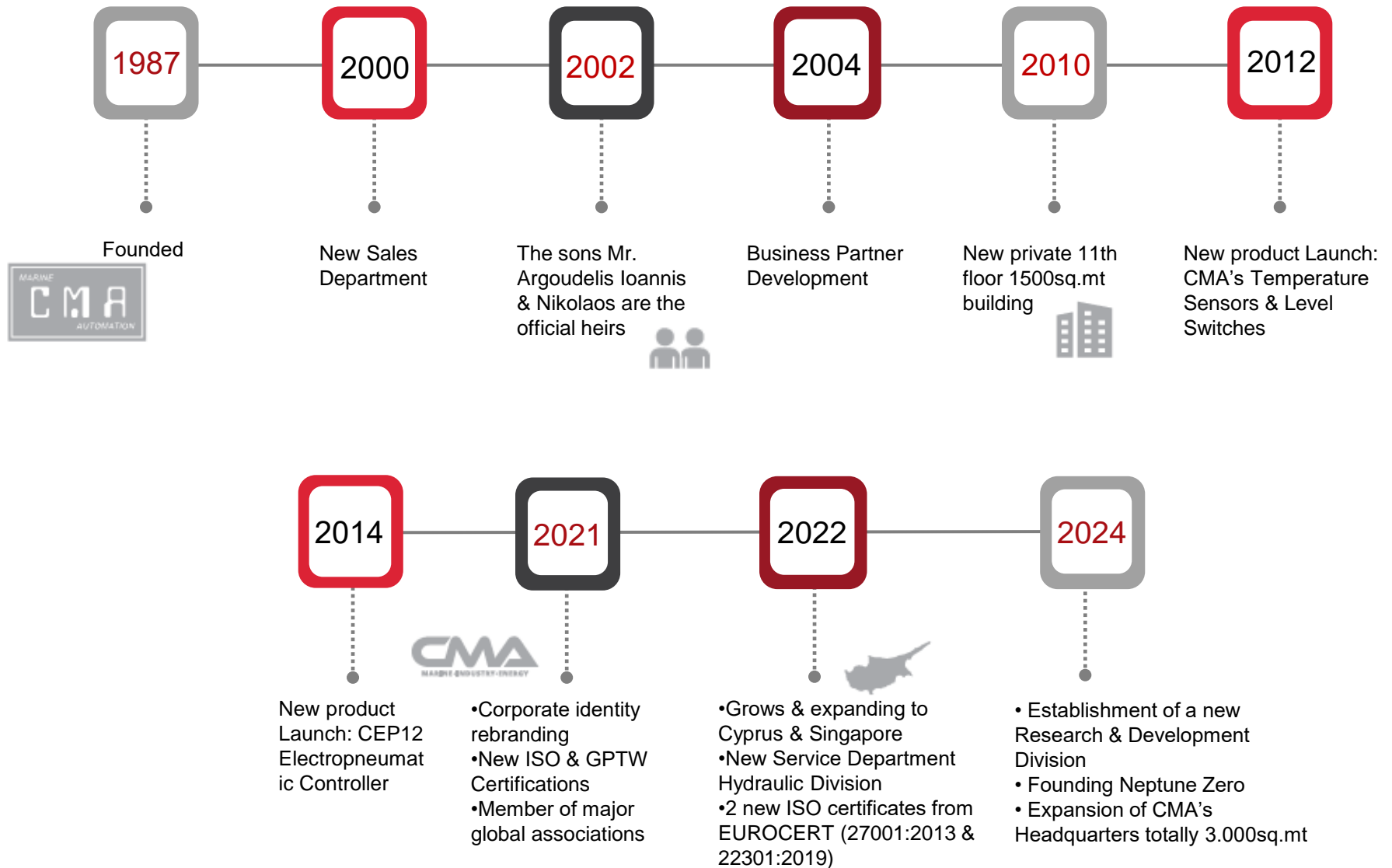
Nikolaos Argoudelis
CO-OWNER/CEO

“ We believe in the Human factor,
and we invest to our people
so we can grow together ”

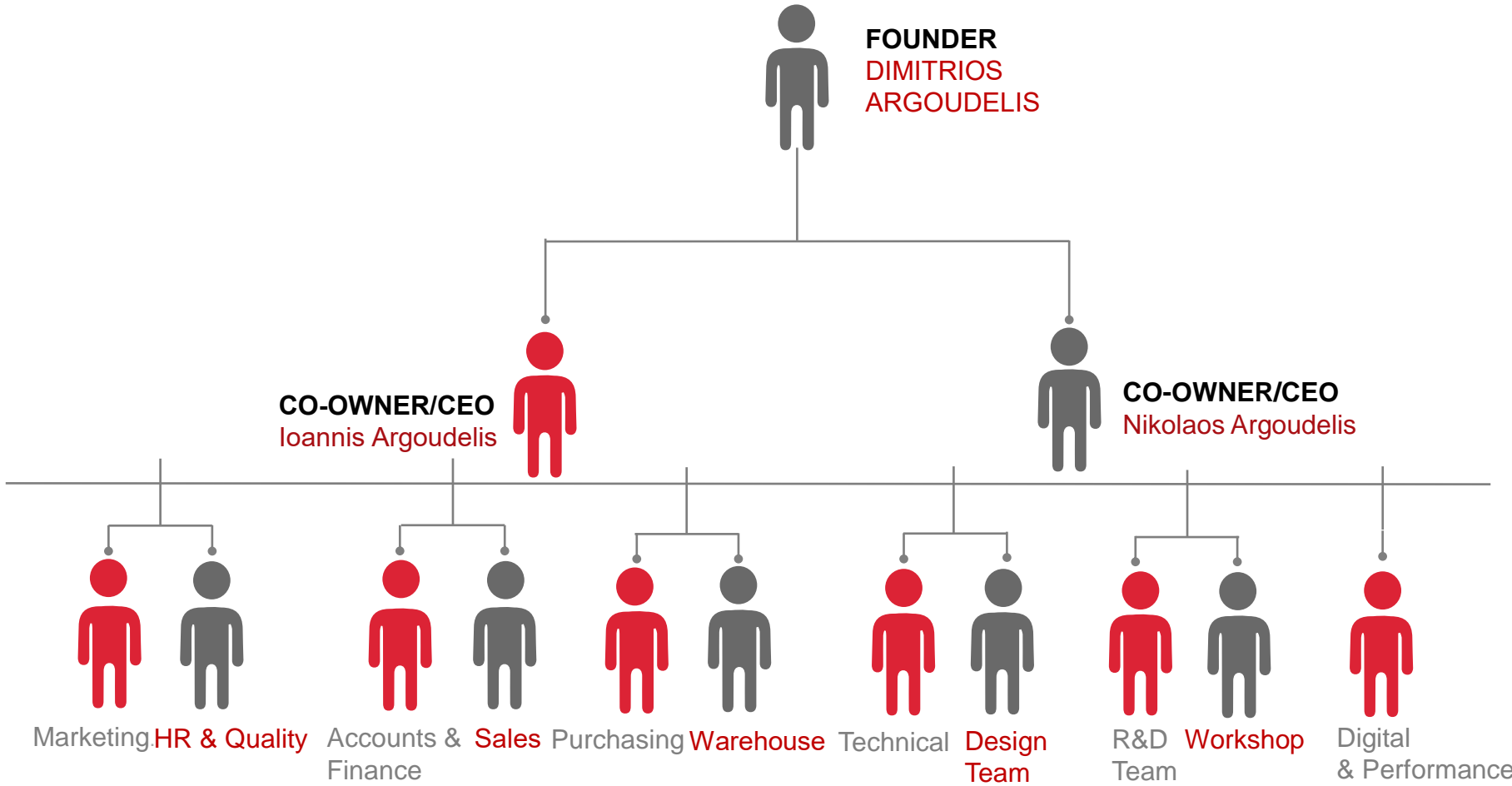
We invest in quality and deep research in order to understand our customer’s mindset and needs. Adding to the above, we have the experience to offer complete solutions to our clients. **CMA** is a company which has accomplished a total business maturation and has a steady ground.



Our historical timeline



Organizational chart



Our vision & mission



Vision

CMA will continue to grow with your contribution, as the market is very demanding and very competitive. The future in marine, industrial & energy market is the path that lead us to evolution. According to this we will follow and keep our quality in the highest levels.



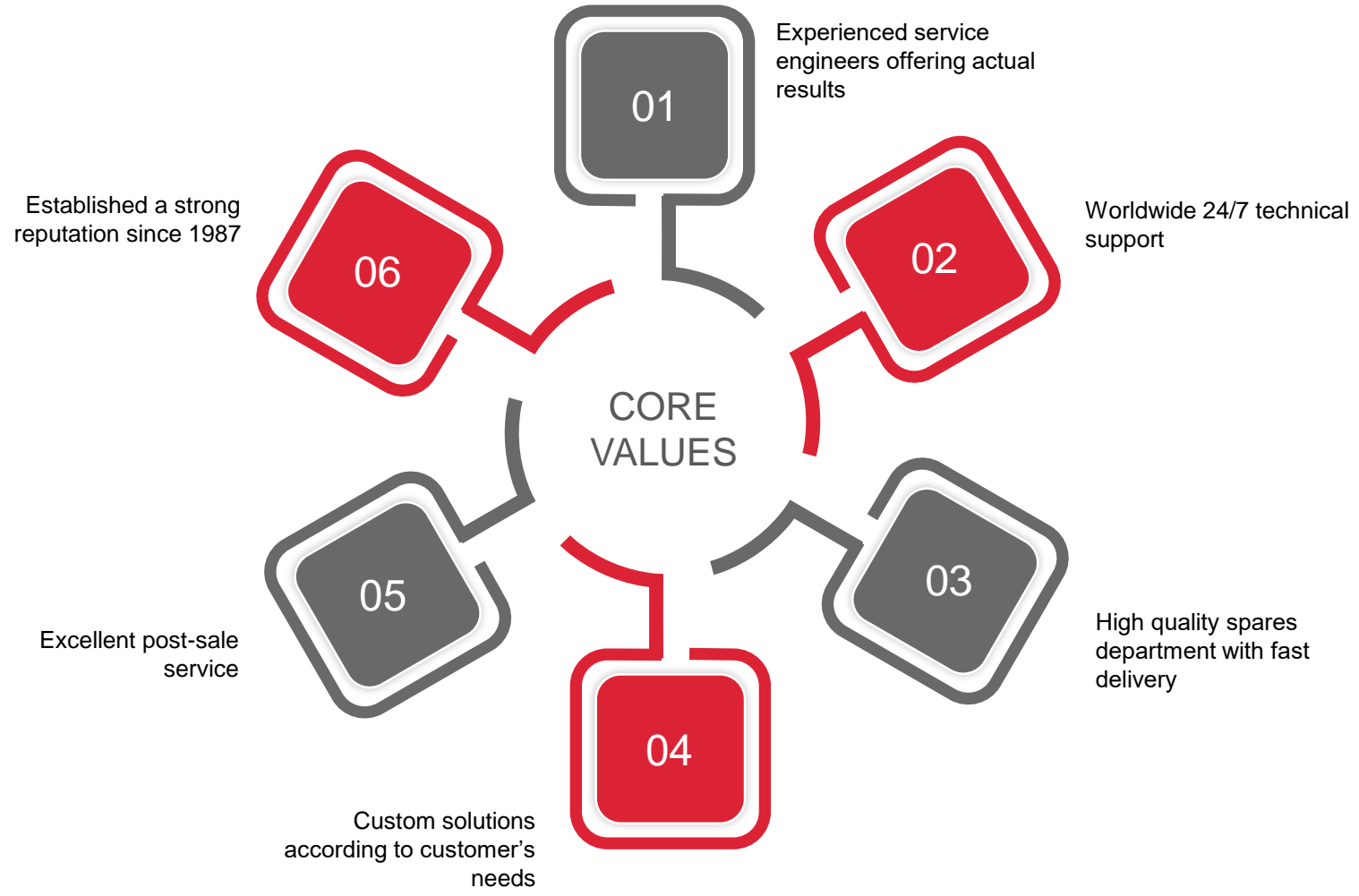
Mission

Emphasizes the human factor in its mission, CMA blending new technologies and innovation to foster a culture that values creativity and expertise. This approach ensures continual advancements in automation solutions that not only meet industry standards but also enhance employee engagement and client satisfaction.

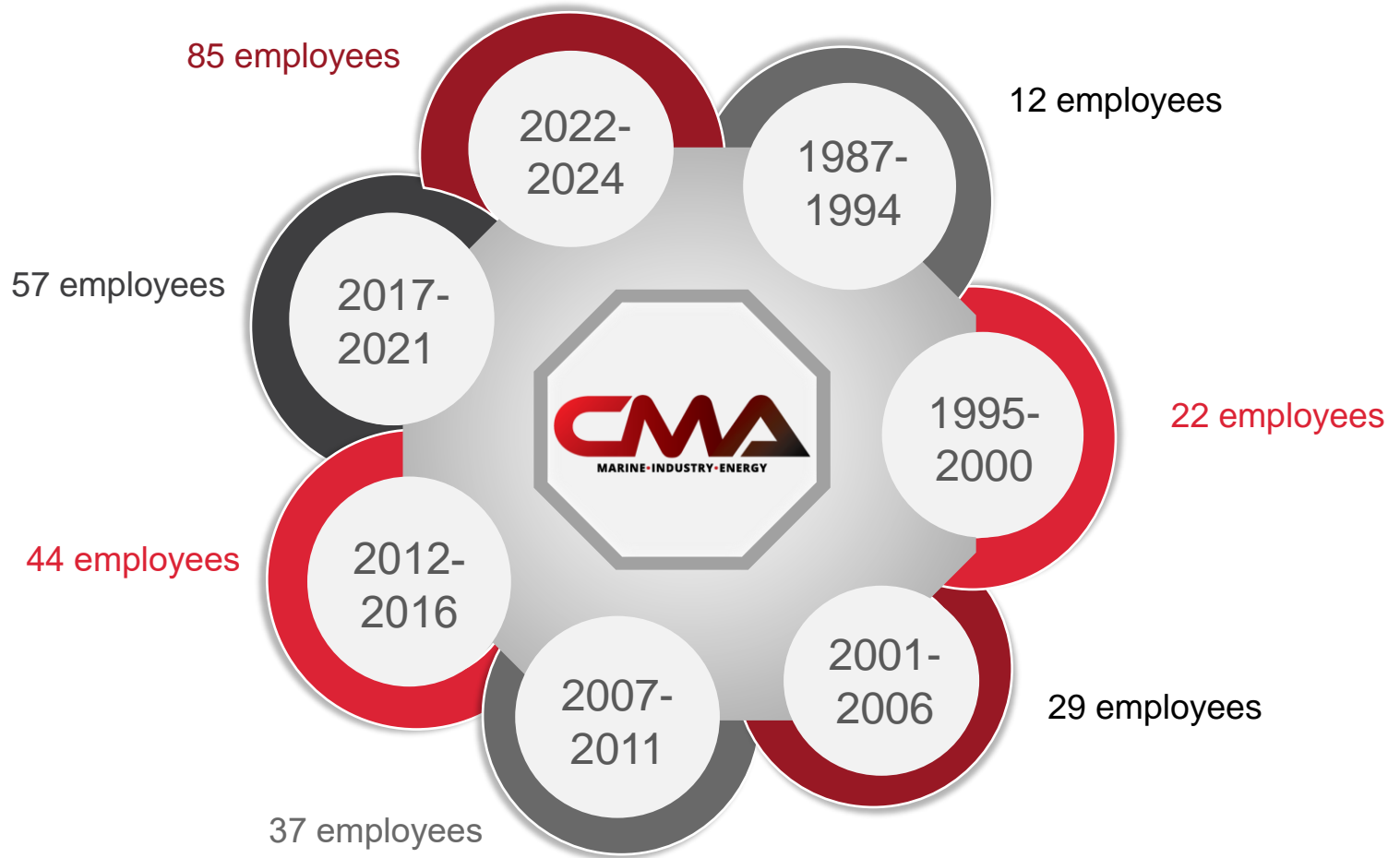


Our goals and objectives





The growth rate of human resources



Main collaborations



Reference list

MARINE

 ERMA FIRST THE EXCELLENCE OF SIMPLICITY	 BSM	 MAERSK	 MINERVA MARINE Inc.	 COLUMBIA SHIPMANAGEMENT
 MDM MARAN DRY MANAGEMENT INC.	 THENAMARIS PHILIPPINES	 NE	 TCM	 MTM MARAN TANKERS MANAGEMENT INC.
 MSC	 DYNACOM TANKERS MANAGEMENT LTD	 TMS	 V.Ships Offshore	 ANGLO-EASTERN
 COSTAMAR	 NAFOMAR	 STAR BULK	 Stealth Maritime Corporation S.R.	 TECHNOMAR SHIPPING INC

INDUSTRY

 MYTILINEOS	 TITAN	 TERNA GEC TERNA GROUP	 ELVALHALCOR	 CABLEL ΕΛΛΗΝΙΚΑ ΚΑΛΩΔΙΑ Ο Μ Ι Α Ο Σ
 ΕΛΛΗΝΙΚΑ ΠΕΤΡΕΛΑΙΑ	 DEMO S.A. PHARMACEUTICAL INDUSTRY	 AKTOR	 FLEXOPACK	 KRI KRI

MEVGAL

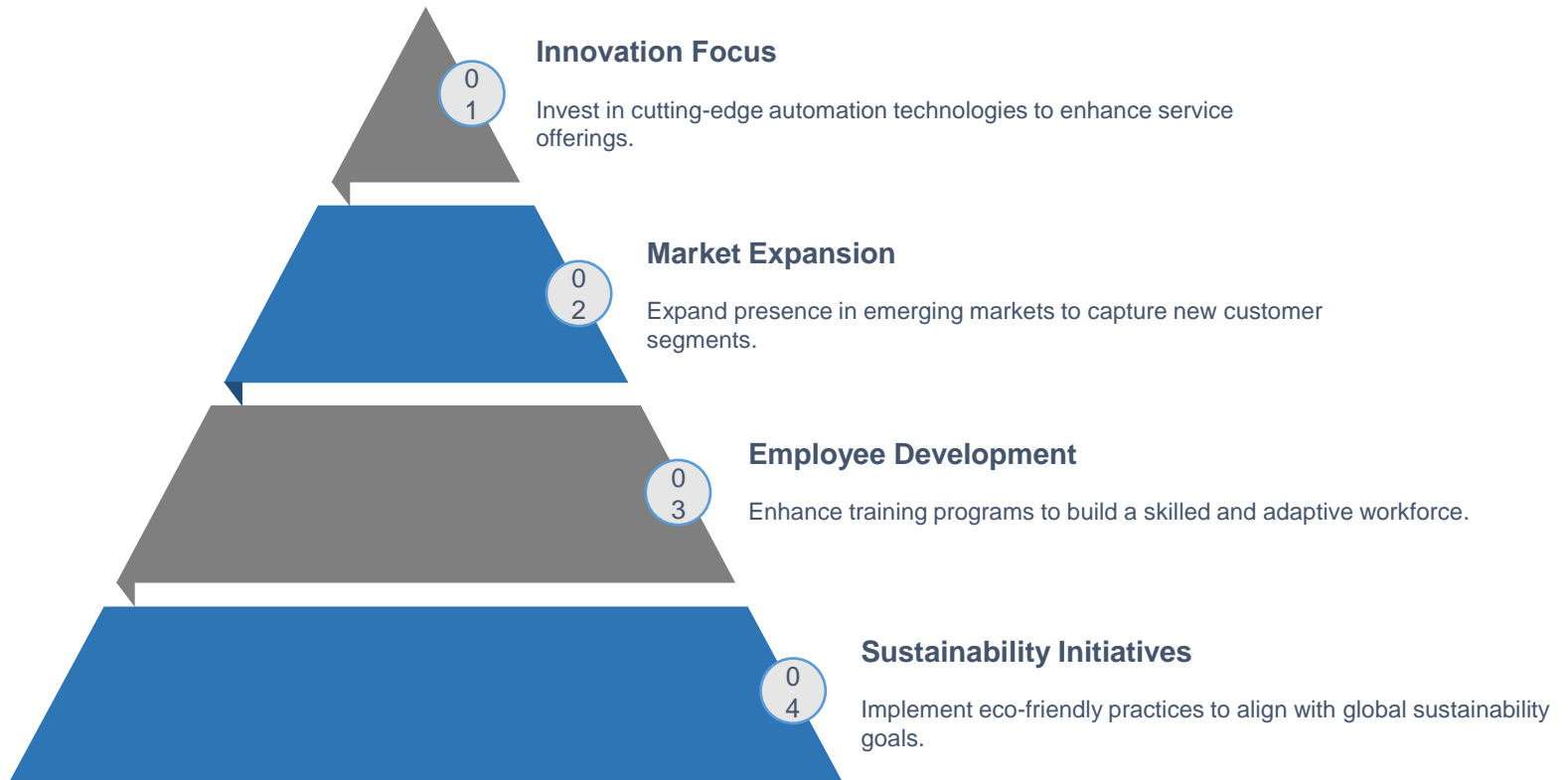


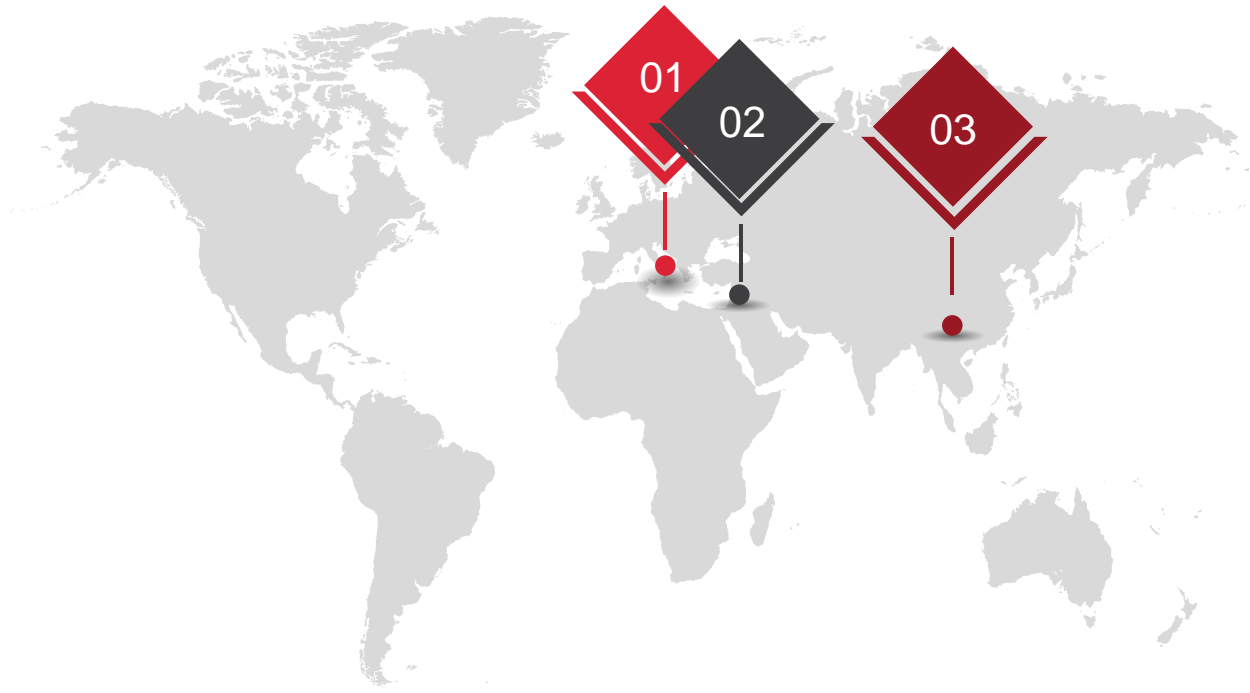
TPAINCE

ENERGY

 ΔΕΗ	 EDATHESS ΕΛΛΗΝΙΚΟ ΣΥΣΤΗΜΑ ΠΡΟΣΩΠΟΥ ΠΡΟΣΩΠΟΥ ΥΠΟΛΟΓΙΣΤΩΝ	 DESFA National Gas Transmission System Operator S.A.	 edf	 ELLAKTOR
 elpedison	 oione			

Future growth strategies





Headquarters (Greece)
Address:
20 Fokionos str., 185 45
Piraeus
Contact Number:
+30 210 46 15 831
Email Address:
cma@cmagreece.com

Subsidiary (Cyprus)
Address: Themistokli Dervi
41, HAWAII NICOSIA
TOWER, 8th floor, Flat/Office
806-807
Email Address:
cma@cmagreece.com

Subsidiary (Singapore)
Address: 7 Tuas South Avenue 10,
T99 Building, Singapore 637011
Email Address:
cma-sg@cmareece.com

Follow us on social media



THANK YOU